

GPS Receiver, 4 x 1PPS / 4 x 10MHz Outputs – stand-alone unit.



> GPS Smart



> GPS receiver front view



> GPS receiver rear view

Description

With a compact and light modular hardware design to bring you a powerful time & frequency reference system at the lowest cost.

Intelligent solution for all your requirements for time synchronization and frequency. The GPS receivers, designed with "Carrier Aided Tracking" technology with 50 parallel channels.

Distributors are available, moreover, for frequency reference signals as well as for timing-reference signals.

The discontinuity of the presence of the reference signal does not jeopardize operation of the equipment, thanks to the substantial stability of the oscillator.

Main Features

GPS RECEIVER

- 50 parallel channels.
- C/A code 1,023 MHz chip rate.
- Carrier Aided Tracking.
- Precision in position: 25 m (SA absent), 100 m (SA spec. UD DoD)
- Suitable for use with active antennas.
- LAN TCP/IP
- Aux TLS relay contact available on the rear panel.

FREQUENCY REFERENCE

Number of outputs	4 x BNC, 50 Ω (2 rear and 2 front side)
Output signal	10 MHz, sinewave, 1 V p.p.
Short term stability	Better than 5x10 ⁻¹² (1 sec.)
Frequency accuracy	Better than 3x10 ⁻¹² (24 hours continuous power up and GPS)
Holdover drift	±5x10 ⁻¹⁰ /day
Phase noise @ 100 Hz	Better then -145 dBc/Hz
Phase noise @ 10 kHz	Better then -155 dBc/Hz
Cold startup	Less then 10 min.

TIMING REFERENCE

Number of outputs	4 x BNC, 50 Ω (2 rear and 2 front side)
Output signal	1 PPS, 5 V TTL, square wave
Timing accuracy	±100 ns peak (24 hours continuous power up and GPS)
Holdover drift	±1 μs (5 hours without GPS) < 24 μs (24 hours without GPS)

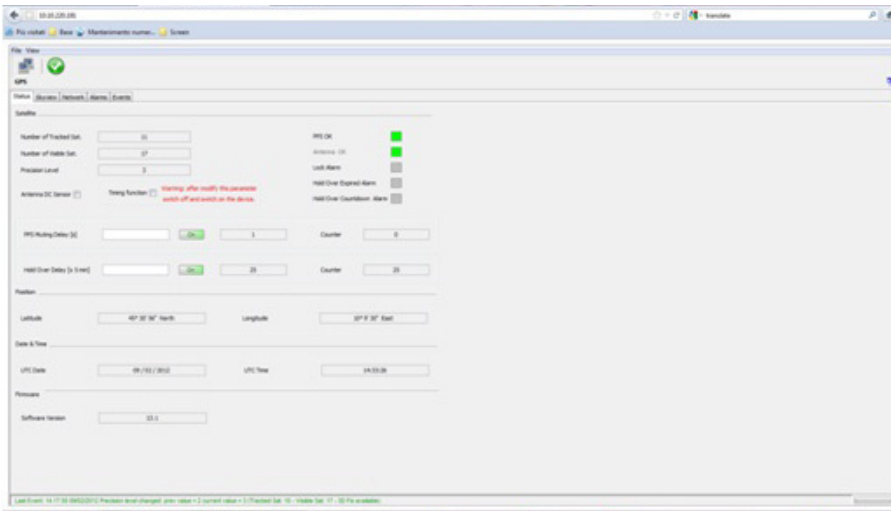
GENERAL

GPS antenna input connector	N female, 50 Ω (rear or front side), lightning protection available as option
Operating temperature	-10°C to +45°C
Maximum relative humidity	90%, non condensing
Power supply	100 to 240 V AC, 50 to 60Hz or 24 V DC
Dimensions	1 RU (19" rac) half unit 484 mm (W) x 350 mm (D) x 45 mm (H)
Weight	2 kg (approx.)

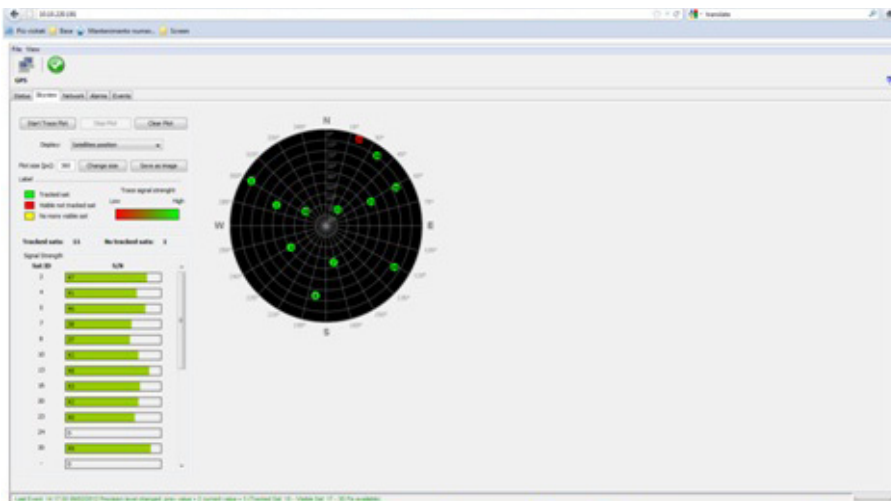
OPTION

Lightning protection	
5 MHz output (2MHz on request)	
Kit SCS 118/Mobil Antenna GPS	





*Control Panel



*Skyview