

SPC Headend Central Manager



> EPC Server

Description

The SPC server can manage the DVB headend and generate an EPG for every kind of architecture, including small or large headends.

SPC Server with XBT 525, when combined are the complete solution for the DVB-T Headend Management.

Main Features

SPC has 2 main features:

1) EPG Generation

SPC supports different inputs for the EPG generation: such as XML files or Plain Text Files. Content provisioning can be made manually or via file transfer protocol (FTP) based using periodic transfers. SPC comes with a full-featured EPG editor.

- EPG Server standalone
- Integrated with every multiplexer
- Ethernet output
- SI/PSI generation (PAT, PMT, NIT, SDT, TDT, TOT, EIT P/F and EIT Schedule)
- NTP enabled

2) Multiplexer Management Platform (with XBT525)

SPC allows to easily configure one or more XBT525 multiplexer. SPC includes automatic device discovering and inventory management, an automatic PID filtering, complete MUX management and SI/PSI signalling/generation. SPC is also equipped with an alarm device monitoring.

- Integrated with XBT525
- Full XBT525 management, monitoring and trending
- ASI/Ethernet output
- SI/PSI generation (PAT, PMT, NIT, SDT, TDT, TOT, EIT P/F and EIT Schedule)
- PID filtering and remapping
- NTP enabled

SPC Versions features

- EPG Server standalone
- Integrated with every multiplexer
- Ethernet output
- SI/PSI generation (PAT, PMT, NIT, SDT, TDT, TOT, EIT P/F and EIT Schedule)
- NTP enabled
- EPG Server Management platform
- Integrated with XBT525
- Full XBT525 management, monitoring and trending
- ASI/Ethernet output
- SI/PSI generation (PAT, PMT, NIT, SDT, TDT, TOT, EIT P/F and EIT Schedule)
- PID filtering and remapping
- NTP enabled

Overall key features

- Easy interfacing with program guide content providers
- Real-time EPG updates
- Flexible and scalable hardware/software architecture
- Superior management of PSI tables including EIT P/F and schedule
- XML-enabled to facilitate connectivity
- User-rights management
- Ethernet and/or ASI output capabilities
- User-friendly graphical user interface (Web/HTML) for easy configuration and supervision



EPG Related features

- DVB-SI (ETS 300 468) standard compliant
- SI tables support (PAT, PMT, NIT, SDT, TDT, TOT, EIT P/F, and Schedule)
- SI tables modification and filtering
- EIT P/F transition using the server clock
- Multi-language support
- User-rights management
- NTP client
- Web configuration and supervision

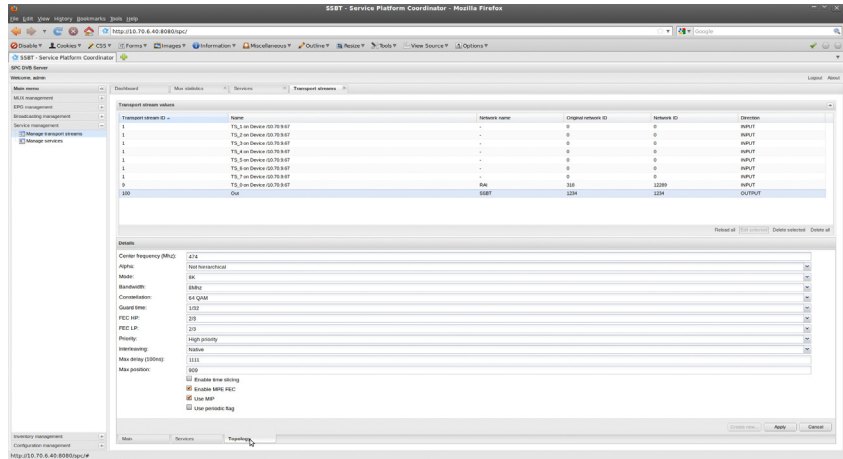
I/O specifications

Input

- XML files
- CVS files
- FTP file transfer
- Periodic file transfer
- Interactive editing

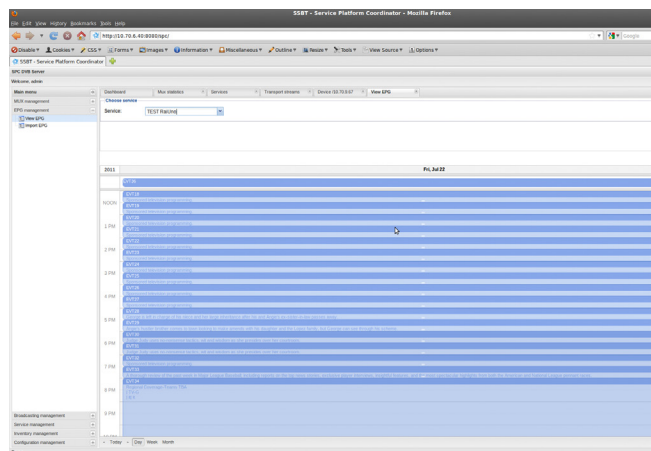
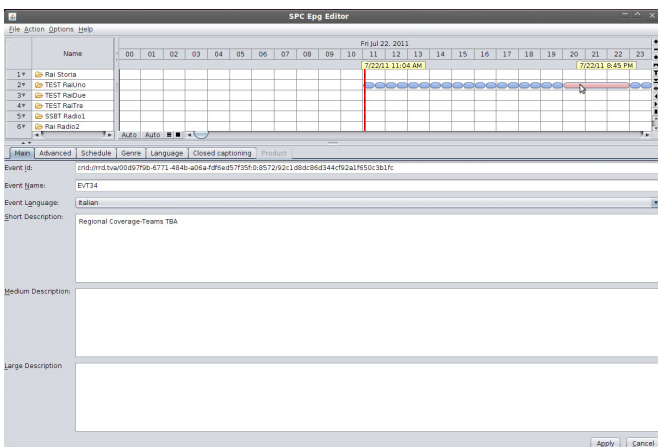
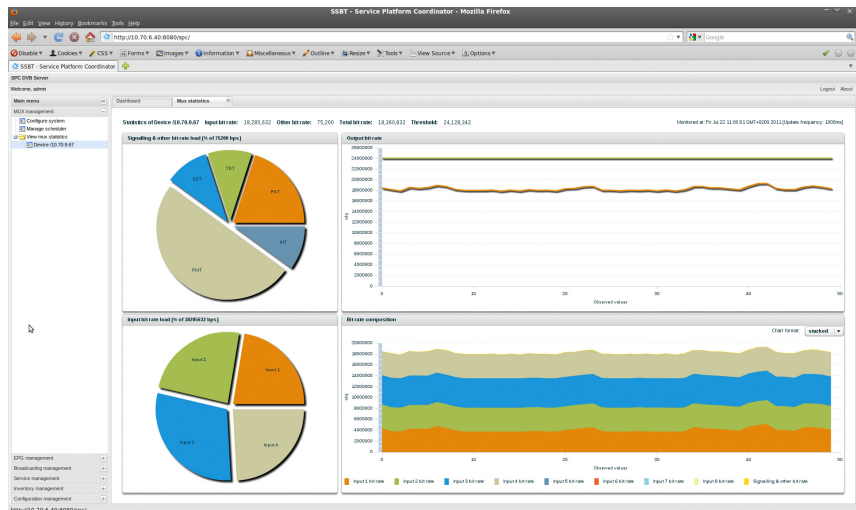
Output

- ASI output interface (with XBT525)
- Ethernet output (both version)



Multiplexer Management

- Full Multiplexer management
- Multiple device management
- High Availability configuration
- Automated device discovering
- Master/slave management
- Automated PID Filtering management
- PID remapping management
- Ethernet and ASI SI/PSI signaling
- Device alarm monitoring and correlation
- Output bandwidth monitoring



Service Platform GUI Screenshots